



**GOOLWA TO WELLINGTON**  
Local Action Planning Association

**Local PEOPLE | Local ISSUES | Local ACTION**



# 2019-20 Annual Report



Goolwa to Wellington Local Action Planning Association has been improving the natural environment in the SA Murray-Darling Basin since 1998. GWLAP is a community based not-for-profit organisation, managed by a board of volunteers and supported by a range of funding partners and fee-for-service activities.

GWLAP works on small and large scale bushcare and revegetation projects both on private and public land in a diverse range of landscapes. GWLAP supports local community groups and individuals to undertake on-ground works.

### **Why Goolwa to Wellington?**

The Goolwa to Wellington LAP area as set in 1998, encompasses all of the plains and catchments flowing directly into Lake Alexandrina between Goolwa and Wellington. This includes the Bremer/Barker, Angas and Finnis River catchments, Sandergrove, Monarto South, Mulgundawa and Brinkley plains areas, the western half of Lake Alexandrina including Hindmarsh Island and Mundoo Islands and the River Murray Mouth.

Today, GWLAP is not as geographically confined as in 1998, and are able to take on projects well outside the original project area.

### **Why Local Action Planning?**

Local Action Planning groups were set up in the SA Murray-Darling Basin to develop and implement plans to accelerate action to address the important issues in a local area. Local Action Planning provided a means for the community to decide what should be done to turn existing plans into action. More than 2 decades on, Local Action Planning is still very relevant. GWLAP is still directed by the community and continues to achieve important, significant, beneficial environmental actions.

### **Our vision:**

To create an environment where human activity and natural ecosystems can sustainably co-exist.

### **Our mission:**

To work with local communities to protect and restore biodiversity and sustainably manage our natural resources.





# OUR BOARD AND STAFF 2019-20

---

## **GWLAP Board**

Keith Parkes (Chair)  
Anne Welsh (Vice-Chair)  
Margaret Wilksch OAM (Treasurer)  
Merri Tothill (Secretary)  
Derek Fenton (Public Officer)  
Bruce Brooks  
Ian Grosser  
Harry Seager  
Barry Lincoln  
Janet Klein  
Paul Johnston  
Dana Miles

## **GWLAP Staff**

Ross Oke (General Manager)  
Keren Stagg (Finance and Administration Manager)  
Will Miles (Operations Manager)  
Ben Simon (Senior Project Officer)  
Leah Hunter (Project Officer)  
Alyssa Lovelock (Project Officer)  
Jacqui Wilson (Community Engagement Officer)  
Jim Mead (Executive Officer, Landcare Association of South Australia)

## **Works Crew**

Aaron Cheesman  
Dylan Oke  
Alan Bateman  
Mark Newbery  
Darren Welsh



Works crew doing site maintenance at Anembo Park SEB Project, Mt Barker:

# CHAIRPERSON'S REPORT

---

Last year I wrote that I hoped that 2019/20 would be the beginning of a new era. It turned out to be true, but not in the way we would have liked. A time of reckoning has arrived, and we have witnessed the impacts of land clearance on our planet, through two unprecedented events – the immense bushfires throughout Australia and the current Global Pandemic.

These major catastrophes are caused primarily by land clearance and the resulting change in our climate. Each arises from our unwillingness to respect the interdependence between ourselves and the natural world.

Biodiversity is declining faster than at any time in human history. We clear forests and remove habitat, bringing human settlements closer to wild animals and the naturally vegetated areas they inhabit. This increases the risk of disease transmission from animals to humans and of the loss of life and assets due to wildfire. What we have seen in 2019/20 clearly highlights the need for us to change these practices.

But, as an organisation, we are a group of optimists. We believe that the work we put into our region will make a difference, and we will keep fighting for the resources needed to protect and enhance our vital natural assets.

We are very happy to have welcomed Dana Miles to the GWLAP Board at the last AGM. Dana has brought a fresh perspective to board discussions and provided important insights into NRM reform, through her involvement in the new Hills and Fleurieu Landscapes Board.

Once again, our staff and board have proved to be adaptable and resilient. I was pleased with GWLAP's response to the bushfire crisis in the Adelaide Hills, quickly setting up pop-up nurseries at Woodside School and the Strathalbyn Natural Resource Centre.

We have negotiated the pandemic lock-down with good humour, adapting to Zoom meetings and work-from-home arrangements, and are pleased to be able to open the Strathalbyn Natural Resource Centre again and meet face to face.

As an organisation, we continue to navigate the changes around us and explore new and innovative ways to attract investment into our region. We are here, ready to partner with anyone who shares our vision of a positive, sustainable future.

So, my hopes for 2020/21? That we all recognise that what we faced in 2019/20 was due to our neglect of the environment, and as a society start working hard to turn that around.



Keith Parkes  
Chair  
Goolwa to Wellington  
Local Action Planning Association



# GENERAL MANAGER'S REPORT

---

What an eventful year it has been! From the establishment of new regional boards under the State Government's Landscape South Australia Act 2019, through the impacts of severe bushfires to COVID-19, we have certainly drawn upon our collective ability to adapt to change. Flexibility and adaptability are critical to the success of any organisation, whether in response to change arising from external factors or through internally driven endeavours to improve the way things are done or to seek new opportunities. The instability of our environment and natural resources sector, particularly the community-based segment, has no doubt driven a need to be flexible - but this year stands out as one with particularly challenging circumstances.

We are thankful that our grant funded activities have continued through this COVID-affected period, with some minor changes to contracted deliverables as supported by our funding partners. Being predominantly outdoor-based, our field work has also continued, albeit with the use of additional vehicles during the period of stricter social (physical) distancing. Our staff and board members adapted quickly to working from home and using video conferencing and other technical tools to keep in touch, not only between ourselves but with existing and new partners.

Our core GWLAP region is now situated predominantly within the new Hills and Fleurieu region. We have made good progress establishing communication and building our relationship with the new board and staff members. We are looking forward to a strong partnership for the continued management of our region's natural resources. A sizeable portion of GWLAP's core region remains in what is now the Murraylands and Riverland region. Having worked together with other LAP groups and the SA Murray Darling Basin regional board for over 22 years, we are keen to continue to work closely with these partners into the future. Two recently approved projects under the Murraylands and Riverland Grassroots Grants initiative will go a long way to making sure these strong links are maintained.

GWLAP continues to work closely with local community groups including some new ones in our region. The level of activity in some areas has certainly declined with the cessation of some major projects including the 20 Million Trees Program but we are investigating new opportunities for funding much needed work with the aim of involving local groups in these endeavours.

Our positive working relationships with other partners continue to strengthen: GWLAP is a key delivery partner for the SA Department for Environment and Water for their Flows for the Future program. We are continuing to assist Nature Foundation with their Water for Nature program. Further projects have been implemented with Greenfleet, Mount Barker Council and Alexandrina Council and new initiatives have been developed with the Landcare Association of SA and many others.



I thank the GWLAP Board for their continued support and again acknowledge our great staff, contractors, community, project and funding partners for their efforts, achievements and willingness to adapt and respond to the challenges we face. I hope that you enjoy reading this report which highlights some of what we have achieved together in 2019/20.

A handwritten signature in black ink, appearing to read 'Ross Oke', with a stylized, flowing script.

Ross Oke  
General Manager  
Goolwa to Wellington Local Action Planning Association Inc.



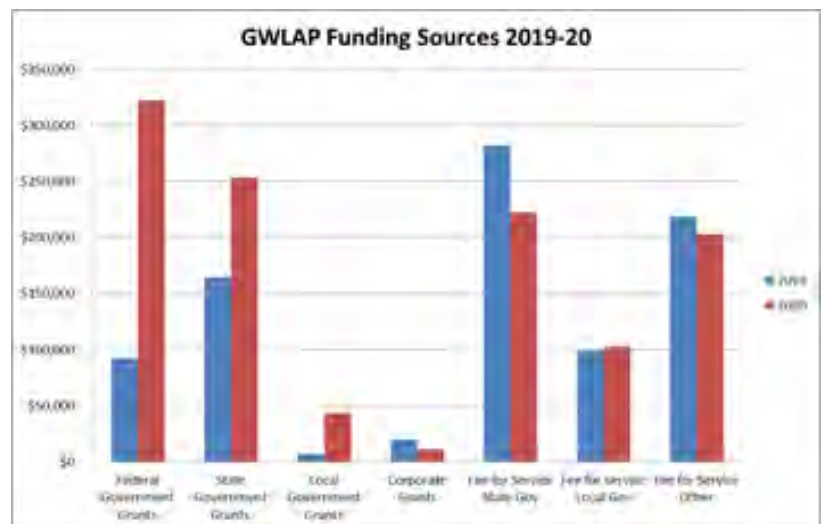
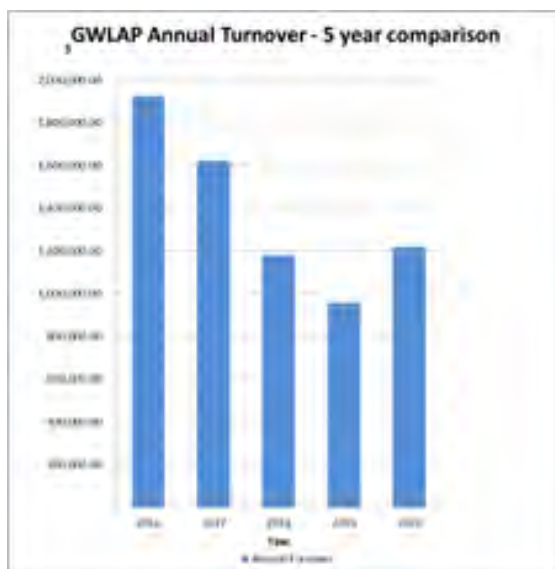
# TREASURER'S REPORT

Annual turnover for 2019-20 was \$1,216,602 which was \$259,350 (27%) higher than 2018-19.

The main drivers of this increase in turnover were Grant funding received from the Commonwealth Department of Agriculture, Water and Environment for the Murray-Darling Basin Economic Development Grant (\$234,000) and the Seeds for Success Grant (\$37,900); and also Federal Government Department of Industry, Innovation and Science Community Environment Program Grants (\$47,100). GWLAP also received an additional \$50,000 due to the Federal Government Covid19 Cash Flow Boost incentive.

During 2019-20 overall fee-for-service social enterprise revenue fell by \$71,568 (12%) which was primarily due to reduced FTE hours for the Flows for the Future project (-\$40,306) and a general reduction in Corporate fee-for-service projects (-\$31,122).

The below graphs show a comparison of GWLAP Annual Turnover for the past five years plus a breakdown of 2019-20 funding by source. The "Fee for Service – Other" category includes income derived from partnerships with enterprises such as the Landcare Association of South Australia, and Nature Foundation SA, plus on ground works performed for Corporate enterprises, Community groups and individual landholders.



**Major funding providers during 2019-20 were as follows:**

- **Department of Agriculture, Water and the Environment** - \$271,900. The Murray-Darling Basin Economic Development Grant (\$234,000 in 2019-20) aims to strengthen the local tourism economy through the enhancement of existing facilities and the implementation of new visitor infrastructure which includes additional walking trails and bird hides at four tourist destinations on the River Murray Lower Lakes Foreshore. The Seeds for Success Grant (\$37,900) aims to increase the adoption of best practice sustainable agriculture by land managers which will lead to more sustainable food, fibre and forestry production whilst protecting and improving Australia's biodiversity.
- **Department for Environment and Water (DEW) (State Gov't)** - \$299,766. The Flows for the Future fee-for-service contract (\$139,125 in 2019-20) is part of a joint Commonwealth and State Government program investing in infrastructure such as low flow devices in order to re-establish 'more natural flow patterns across catchment areas' and return low water flows back in to water courses within the Eastern Mount Lofty Ranges Water Resource Plan area. A further \$140,750 was received through the Native Vegetation Council for restoration of Red Gum Woodlands in the Finnis River catchment (\$270,000 over 3 years) and Eastern Hills catchment (\$188,250 over 2.25 years). Combined, these two projects will fund the restoration of approximately 1,550ha of high value remnant vegetation.

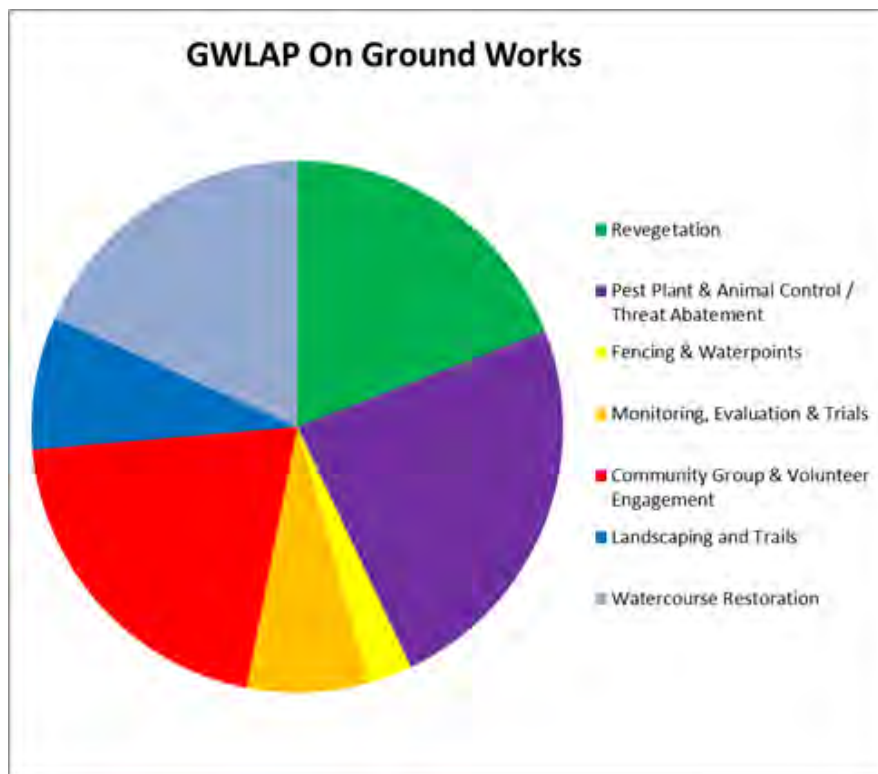
- **Natural Resources SA Murray-Darling Basin (SAMDB NRM) Board (State Gov't)** - \$171,239. The SA MDB NRM Board continued to provide significant support to GWLAP in the form of both grant and fee-for-service funding which enabled the engagement of our local community through projects such as connecting schools with local community groups; citizen science projects; coastal, wetlands and bird monitoring programs; and the management of the Strathalbyn Natural Resource Centre. Just under \$20,000 was also provided to GWLAP to assist with pest weed control within the SA MDB area.
  - **Mount Barker District Council** - \$97,438. Just over \$78,000 in the delivery of plants, revegetation, weed management and habitat creation at the Springs and Laratinga Wetlands and other sites within the Mount Barker area; plus another \$19,365 to foster sustainable gardening practices in the Mt Barker Council area.
  - **Landcare Association of South Australia (LASA)** - \$91,678. This funding allowed for a continued collaborative relationship with GWLAP hosting LASA's Executive Officer, and the provision of financial and HR management to the association.
  - **Landcare Australia Ltd** - \$46,806. \$27,908 to restore and create habitat in the Cudlee Creek fire zone through the Bush Fire Recovery and Wires Grants; plus \$15,000 of grant funding provided through their partnership with the Coca-Cola Foundation to continue to support and encourage the Goolwa Coastcare community group (auspiced by GWLAP) to 'take hands-on action for a cleaner coastal and marine environment'.
  - **Department of Industry, Innovation and Science** - \$37,100. Funding received through the DIIS Communities Environment Program to revegetate and restore habitat in the Bremer Barker and Bull Creek Catchment areas.
  - **Nature Foundation SA** - \$33,551. Just under \$27,000 for environmental watering associated with the Water for Nature project and revegetation and site maintenance at Watchalunga. \$6,555 for Community Engagement on the Milang Snipe project and Fire Recovery Grant administration.
  - **Natural Resources Adelaide and Mt Lofty Ranges (NRM AMLR) Board (State Gov't)** - \$23,000. Fee-for-service funding provided by NRM AMLR NRM Board for pest weed control within the AMLR area.
  - **Martin Road Development Pty Ltd** - \$21,915. Revegetation and ongoing maintenance of the Spring Lake Reserve at Mount Barker.
  - **Angas Bremer Water Management Committee** - \$16,362. For the ongoing provision of Project Coordination and Secretarial/Finance services and support by GWLAP staff to deliver on the Committee's existing grants, annual irrigation reporting requirements.
  - **Alexandrina Council** - \$13,382. For the revegetation and maintenance on a number of Alexandrina Council's sites.
- GWLAP has also maintained its fee-for-service agreement with Terramin Australia Ltd in providing Secretarial services to the Strathalbyn Community Consultative Committee.

In-kind finance and administration support was provided to the Angas River Catchment Group, Prospect Hill Bushcare Group, Goolwa Coastcare Group, Macclesfield Bushcare Group and the Nairne Landcare Group.

Operating expenditure for 2019/20 was \$1,078,000 million, resulting in a net surplus for the year of \$188,603. It should be noted that the timing of income and expenditure for individual projects can occur over consecutive financial years. ie. Project funding may be received in one financial year and expended in the following one. This is the case for the Murray-Darling Basin Economic Development Grant as OGW as due to be performed later in the year.



The following graph shows a breakdown of how the 2019-20 aggregated funding was spent across each category. Project Officer salaries have been included and were allocated according to the time spent on each activity. The majority of funds received during 2019-20 were spent on pest plant and animal control / threat abatement (\$151.9k). Community engagement (\$131.3k), revegetation (\$122.1k) and watercourse restoration (\$116.5k) continue to be a core focus of GWLAP, followed by fencing / landscaping and trails (\$68.7k) and monitoring and evaluation (\$42.7K).



Margaret Wilksch OAM  
Treasurer  
Goolwa to Wellington Local Action Planning Association

# COMMUNITY ENGAGEMENT

COVID restrictions have meant that face-to-face engagement activities have been limited in 2019/20 and we have had to find alternative ways to deliver a number of projects. Luckily, with the support of the community, we have been able to meet our contract obligations and deliver community engagement outcomes.

## Acid Soils testing Blitz

Natural Resources, SA Murray-Darling Basin contracted GWLAP to engage the community to learn more about the issues associated with soil acidity and test their own soil.

In early April, the Soil Acidity Testing Blitz was launched on social media and newsletters followed soon afterwards by a mail-out of 3,500 flyers through Australia Post.

Landowners signed up to the project to receive a free Soil pH test kit in the mail with the expectation that they would test at least three sites on their property and report back the results.

Throughout April and May, 90 pH test kits were distributed to landowners with 10 acres or more. In addition to the test kit, landowners were provided with information about soil pH, how to test for soil pH and how to treat soil acidity. Participants could submit their results via an online form or fill out a paper version and scan/email or take a photo and text their results.

Participants were reminded via email, text and phone call to return their results. Slightly more than 50% of participants chose to use the online form.

Fifty-eight people returned pH test results from 3 sites or more. Twenty-one people (36%) used the paper/datasheet, the others all used the online portal.



Left - soil pH test kits ready to be posted - with assistance from 'Leo'



## Mount Barker Wildlife Gardening

Mount Barker Wildlife Gardening is a partnership between GWLAP and Mount Barker District Council to encourage residents to choose local native plants for their gardens to provide habitat for wildlife and reduce weeds entering native vegetation and waterways.

The Mount Barker Wildlife Gardening plant pack offer for 2020 (20 local native garden plants for \$25) was launched on the dedicated Facebook page on March 5th 2020 with all packs sold by March 7th (less than 2 days). In previous years, it has taken a number of weeks for the plants to sell out.

Plant pack orders were taken online with the option of paying online via PayPal or payment on collection. Just over half of payments were made online.

Packs were limited to one pack per household, and the project distributed 200 packs – 4000 native plants. A series of small plant collection days were held to comply with Covid-19 restrictions. A mobile plant collection station was set up at five separate timeslots in public carparks at Nairne, Mount Barker and Meadows. Customers registered for the events online. Two additional events were held for people who had missed their event or forgotten to register.

The Mount Barker District Council native gardening booklet was offered to all customers. A plant species list was emailed to all customers after the packs had been collected.

The seedlings for the project were grown and packed at the Alexandrina Community Nursery. Feedback on the plant packs has been very positive with many people commenting on the high quality of the plants and the mix of species.

## Mega Murray-Darling Microbat Project

Jacqui Wilson travelled to Te Anau in New Zealand to present on GWLAP's role in the Mega Murray-Darling Microbat Project in early March - just before COVID-19 restrictions began.

The Mega Murray-Darling Microbat Project, was a collaboration between the South Australian Museum, SA Murray-Darling Basin NRM Board, Mld Murray Landcare and the University of South Australia.

The project engaged over 300 people and 160 citizen scientists collected recordings and habitat data from over 400 sites to provide 3000 new microbat species records over two summers.

The conference presentation demonstrated the power of partnerships and networks in achieving region wide success by expanding the reach of a community-based project. The presentation was well received and a number of new connections were made at the conference.

During this financial year, GWLAP has provided fee-for-service support to interstate community bat monitoring projects.

Left to right - Dr Sylvia Clarke (Natural Resources, SAMDB), Jacqui Wilson (GWLAP) and Dr Kyle Armstrong (SA Museum)



## Water For Nature Snipe Project

Even when you know exactly where they are hiding in the grass, Latham's Snipe are remarkably difficult to see, they are so well camouflaged. This shy little bird, which weighs in at just 200 grams, flies some 8,000km from Russia and Japan to summer in parts of south eastern Australia, including Milang, before starting the long return journey in March.

To raise awareness of the Latham's Snipe and the work being done through the Water for the Environment Project, GWLAP and Nature Foundation worked together on a community art activity called **The Snipe Project**.

The team at the Milang Men's Shed made Snipe shaped wooden cut-outs for the students from Milang Primary School to decorate and display at the Milang Snipe Sanctuary during March and April.



Alexandrina Council Mayor, Keith Parkes officially opened the Snipe Project art exhibition on the 2nd of March in front of an enthusiastic crowd at Milang.

Ecologist Sam Hardy from Natural Resources SAMDB spoke about the Snipe and Natalie Stalenberg from Nature Foundation presented on the Water for Nature Project.

Nature Foundation and GWLAP have used Commonwealth environmental water to keep the southern basin of the Snipe Sanctuary wet and full of food for the Snipe over summer.

## Other Community Engagement Highlights

- Bat Night at Mount Barker Library on 31st of January. A very well attended event.
- Bremer Water Monitoring - 30 volunteers are collecting water samples from along the Bremer River - the samples are tested for salinity and turbidity.
- Presentation on Australian Birds by John Gitsham at the Strathalbyn Natural Resource Centre.
- Staff and Board members were supported to attend the SA Community Landcare Conference in Bordertown.





# RED GUM WOODLANDS

---

Restoration within Critical Red-gum Remnants in the Finnis River Catchment.

This project has achieved a huge amount of work over the past 2 years to undertake ecological restoration across 260 hectares of *Eucalyptus camaldulensis* (Red gum woodland) and 590 hectares of high value remnant vegetation in the Finnis River Catchment.

Highlights of the project to date include:

- a new population of *Diuris behrii* found on a site at Ashbourne.
- a new population of *Veronica gracilis* on a site at Blackfellows Creek.

Work is currently being undertaken on a 40 hectare site of red gum grassy woodland at Ashbourne that houses more than 85 native understorey species including rare species such as:

- *Calocephalus citreus*
- *Dianella longifolia* var. *grandis*
- *Diuris behrii* - State Vulnerable.

We have continued to collaborate with the Prospect Hill Bushland Group across more than 300 hectares of quality remnant vegetation; building on the past 7 years of work on priority bushland restoration to protect a biodiversity hotspot containing many conservation significant flora and fauna species.

Guided walks were held along the Finnis River and through one of the Prospect Hill Bushland Properties.

Funding for this project has been provided by the Native Vegetation Council through Significant Environmental Benefit Grants to offset the clearance of red gums for the Bald Hills Road interchange at Mount Barker via a special grants round.





# RED GUM REVIVAL

---

This project has been working across 3 key sites in the Eastern Hills to see 15,000 tubestock planted to restore diversity in Red-gum woodland areas.

Highlights to date include:

- Planting of 300 *Banksia marginata* to bolster current woodland areas in the Rockleigh area via a community planting day in Winter 2020.
- Planting and guarding of more than 10,000 local native seedlings covering 25 species on a property at Harrogate to increase biodiversity across more than 5 hectares, all burnt by the 2019 Cudlee Creek fires.
- Planting of more than 1000 seedlings at Jutland Water Reserve as part of a new management plan for the site approved by Barossa Council.



# COASTAL WETLANDS

---

Funded by the Riverland and Murraylands Landscapes Board, this program works on a range of coastal on-ground works and coastcare group support activities as well as wetland community engagement and monitoring. The program generates a large amount of additional on-ground works through the sourcing of alternative funding to complement the program.

Highlights include:

- Six Goolwa Coastcare working bees.
- An additional \$15,000 sourced for coastal activities.
- More than 70 hectares of coastal on-ground works in the form of weed control using skilled contractors followed up by Goolwa Coastcare at working bees.





# SEEDS FOR SUCCESS

---

Funding has been secured from The Department of Agriculture, Water and the Environment, through funding from Australian Government's National Landcare Program and activities are due to commence in October 2020.

The Seeds for Success project will support 20 landholders and 5 field staff to learn more about how to identify, manage, harvest and store native grasses and how to establish native grass pastures using simple on-farm techniques. We look forward to lots of hands on 'learning on the run' through this project.

## IMPROVING BIODIVERSITY WITH THE ST IVES COMMUNITY

---

This grant has allowed the planting of more than 2,500 seedlings at Jakem Farm across more than 60 hectares to improve biodiversity and bolster a number of rare and threatened plant species. Over 250 seedlings of Nationally vulnerable *Olearia pannosa* ssp. *pannosa* (Silver daisy bush) and 250 *Acacia menzellii* (Menzell's wattle) have been planted on the site. Targeted weed control will be undertaken at the site over the coming months. Fifty volunteers have been engaged through this project.

This project is supported by funding from the Australian Government Communities Environment Program via MP Rebekah Sharkie.



# ALEXANDRINA COMMUNITY NURSERY

---

We have had a very productive year at the nursery, growing more than 40,000 plants to cater for dozens of revegetation in the region.

Customers include:

Department for Environment and Water, Mount Barker District Council, Alexandrina Council, Friends of Paiwalla Wetland, Natural Resources, Adelaide and Mount Lofty Ranges, Eco-vineyards project, Wildlife for Wine program, Woodside Primary School, Landcare groups, developers, landscapers, farmers and community groups. Thanks to all for your support.

We grew a number of rare plants for different sites and project including:

*Derwentia derwentiana* ssp *homaolodonta*

*Calocephalus citreus*

*Mentha satureiodes*

*Mentha diamenica*

*Olearia pannosa* ssp *pannosa*

*Acacia pinguifolia*

*Acacia rhetinocarpa*

*Acacia menzellii*

*Selleria radicans*

*Gahnia filum*

*Ghania sieberiana*

*Philothea angustifolia*

Thank you to the 10 volunteers that come and help every Friday on our public retail open days, we could not do what we do without you. Sadly, one of our favourite volunteers was diagnosed with a terminal illness mid-way through the year and within a short time, she sadly lost her battle. We would like to recognise Barbara for all of her hard work, chirpy nature and constant optimism; you are sorely missed by us all.



Nursery Manager: Ben Simon



# FLOWS FOR THE FUTURE

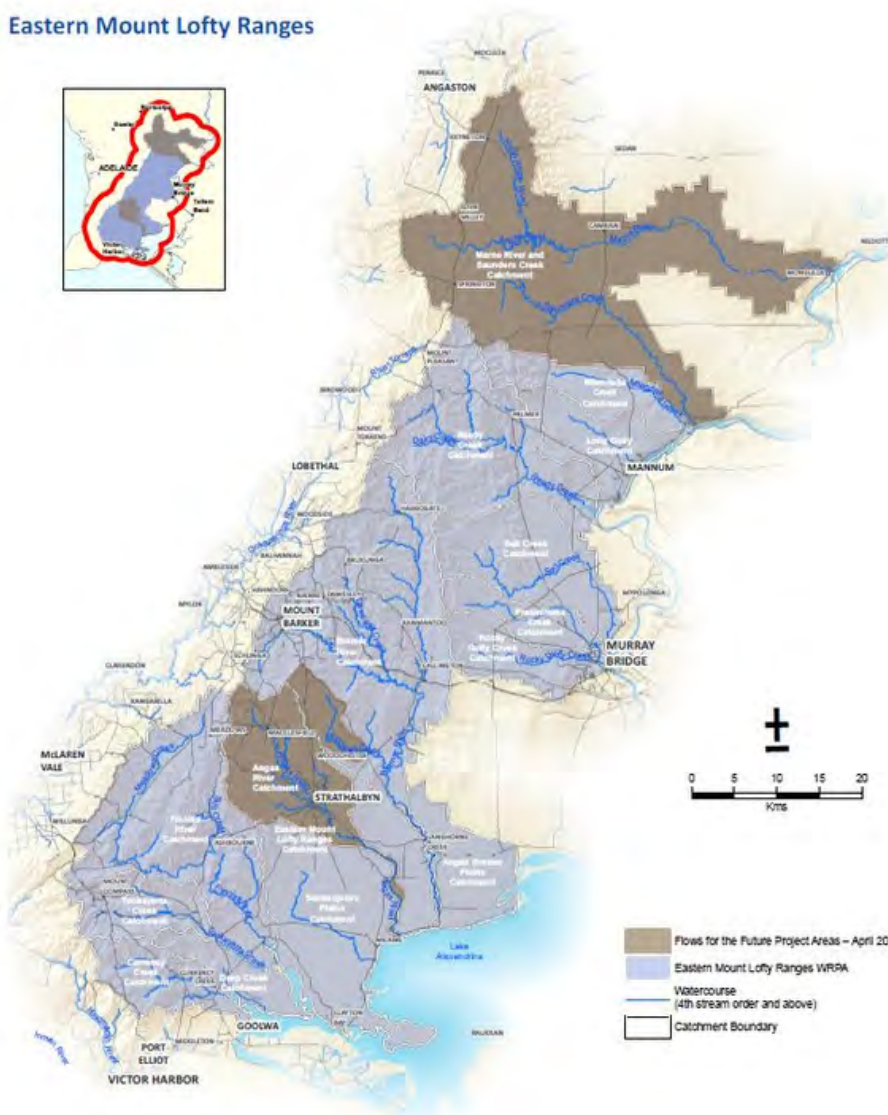
The Goolwa to Wellington Local Action Planning Association has been involved with the Flows for the Future Program for the last three years, contracted by Department for Environment and Water to help engage landholders in the Eastern Mount Lofty Ranges for the project.

Many water catchments in the EMLR are in poor condition, with some parts struggling without flowing water for longer than they've ever had to in the past. While dams are crucial because they provide water security, their combined impact with watercourse diversions has changed the pattern and amount of water flowing through the Mount Lofty Ranges.

The Flows for the Future Program has been established to ensure the long term viability of catchment health within the Eastern Mount Lofty Ranges (EMLR). The project funds the design and restoration of 'low flows' devices on dams and watercourse diversions to restore more natural stream flows through out the EMLR. These devices allow low flows of water to pass around dams into the streamline below, during natural periods of water flow.

There are more than 8,000 dams in the EMLR alone. Low flows are crucial for sustaining a minimum level of catchment health. We know that one of the biggest causes of deteriorating catchment health in the Mount Lofty Ranges is the absences of low flows and the Flows for the Future Program is working to reinstate this critical water pattern.

## Eastern Mount Lofty Ranges



Gravity-inlet device

# GWLAP ENVIRONMENTAL SERVICES

---

The 2019 to 2020 financial year was a successful and prosperous financial year for the Environmental Services arm of GWLAP. Ongoing historical and new relationships with a wide client base resulted in continued momentum and an enormous variety of projects. The work ethic and professionalism of the field staff have been exceptional, and to their credit, they have been willing to adapt, learn and deliver high quality on-ground works. The schedule of works in 2019/20 financial year allowed the GWLAP board and managers to offer two of our core casual staff full-time contracted employment, with a further three casual staff employed to undertake specialised areas of environmental restoration and management works.

The range of on-ground projects delivered include:

- Revegetation: Large scale tubestock plantings, paddock tree plantings and hand seeding
- Weed control: Specialised bushcare, woody weed works, riparian restoration, revegetation site preparation and maintenance, boom spraying and long-line spraying works, tractor slashing and brushcutting.
- Pest animal control: Vertebrate pest and over-abundant species management
- Fencing: Various projects to protect areas of conservation value.
- Environmental watering: Mobilisation, demobilisation and monitoring of pumping equipment to water significant conservation areas.
- Landscaping: Small and large-scale environmentally sensitive landscaping using local native provenance species that improve local biodiversity through providing a range of habitats.
- Property assessments: Engaging landholders and undertaking property assessments statewide for Greenfleet.

GWLAP would like to thank our project partners (new and ongoing) for their support. These include:

- Nature Foundation
- SA Department for Environment and Water
- Hills and Fleurieu Landscape Board
- Murraylands and Riverland Landscape Board
- Landcare Australia
- Mount Barker District Council
- Alexandrina Council
- Martin Road Development- Springlake
- Millbrook Park Development
- Greenfleet
- Department of Energy and Mining
- Macclesfield and Flaxley Landcare Groups
- Our many dedicated landholders looking to improve their properties and our local natural environment



Right: Leask Property, McLaren Flat: Treatment of Olives in preparation for future revegetation.





Above left: Crouch Property, Mt Magnificent: Fencing to exclude cattle from the Finniss River corridor.  
 Above right: Watson Property, Harrogate: Revegetation works in the "Cudlee Creek bushfire" scar.  
 Below left: African Lovegrass Trial, Taillem Bend: Treatment of trial plots.



Above right: Hartnett Property, Point Sturt: Slashing weeds to eliminate seed set.  
 Below left: Mt Barker Council Works Depot: Environmentally sensitive landscaping.  
 Below right: Roadside spraying of African Lovegrass, Mt Compass.





# LOWER LAKES VISITOR ACCESS TRAILS

---

Thanks to a grant from the Australian Government under the Murray–Darling Basin Economic Development Program secured by the Goolwa to Wellington Local Action Planning Association Inc. (GWLAP), facilities for visitors to reserves at Wellington, Clayton Bay, Hindmarsh Island and Point Sturt are being enhanced.

Bird watchers at Clayton Bay now have more ways to enjoy seeing or photographing local birdlife with the installation of two new bird hides adjacent to walking trails and overlooking the “Duck’s Hospital”, Dunn’s lagoon.

Visitors to Murrundi Wetland Reserve at Wellington will appreciate the new additional shelter installed through this project along with a new bird hide overlooking the wetland.

The bird hides, identified as a strategic addition to visitor infrastructure in the Clayton Bay Master Plan, have been artistically designed and manufactured by the skilful people at Meadows Cheese Factory—Bec and Jerome. Made from weathered steel, the hides feature artistically designed cut-outs at various heights to suit bird watchers of all ages and heights. Advice on the design was provided by John Gitsham of Birds SA and the hides feature natural timber ledges to provide support for the use of binoculars or cameras through larger gaps in the screens.

The new shelter at Murrundi Wetland Reserve at Wellington was built by Bridge Aluminium to complement an existing shelter in another section of the reserve.

Now completed, the design and installation of the bird hides and shelter was undertaken by Goolwa to Wellington Local Action Planning Association (GWLAP) in consultation with the Clayton Bay Nursery and Environment Group, the Wellington Progress Association, Ngarrindjeri traditional owners, the Alexandrina Council and Rural City of Murray Bridge.

It is great to see the hides and shelter installed and we hope that they enhance bird watchers’ experiences while also encouraging more people to take up the pastime. The hides also add interest and another feature to the reserves due to the artistic design and materials used. We’ve heard lots of very positive comments, particularly about the look of the bird hides.

The next stage of the project is commencing now and will see the extension of a walking trail at Point Sturt Landcare Reserve and a section of trail construction at Lawari Conservation Park on Hindmarsh Island.

The project has also funded the growing and planting of 1,000 local native plants by local community nurseries and landcare groups at each of the four locations along with further weed control to enhance the environmental and aesthetic values of these important reserves around the Lower Lakes.



Completed installation of shelter and bird hide at Murrundi, Wellington. Side panels and seating will be installed in the near future.





Left: Detail showing site-specific left panel featuring tree branch and Kookaburra along with cut outs and ledges for use of cameras or binoculars.

Below: Selecting the location of the bird hides with representatives from the Clayton Bay Nursery and Environment Group and Alexandrina Council.



Above: Completed installation of one of the bird hides at Clayton Bay.

Left: Excavation of footings for one of the two bird hides at Clayton Bay being supervised by Ngarrindjeri man Owen Love to monitor for any culturally sensitive remains or artefacts.



Above left: Detail showing view through a cut-out on the hide at lake level, Clayton Bay.

Above right: Each hide has a carved detail in one of the natural timber ledges. The ledges are designed to provide support for the use of cameras or binoculars.

**GOOLWA TO WELLINGTON LOCAL ACTION PLANNING ASSOCIATION INC.**

**FINANCIAL STATEMENTS**

**FOR THE YEAR ENDED JUNE 30, 2020**

**STATEMENT OF FINANCIAL PERFORMANCE**

**STATEMENT OF FINANCIAL POSITION**

**STATEMENT OF CASH FLOW**

**NOTES TO THE FINANCIAL STATEMENTS**

**STATEMENT BY THE MANAGEMENT COMMITTEE**

**REPORT BY THE MANAGEMENT COMMITTEE**

**SUMMARY OF PROJECT FINANCIAL PERFORMANCE**

**INDEPENDENT AUDITOR'S REPORT**



**GOOLWA TO WELLINGTON LOCAL ACTION PLANNING ASSOCIATION INC.**

**STATEMENT OF FINANCIAL PERFORMANCE**

**FOR THE YEAR ENDED JUNE 30, 2020**

	NOTE	2020	2019
<b>INCOME</b>			
<b>Grants</b>	4	\$	\$
Grants (C'wealth) Op-Non Rec		322,500.00	92,230.00
Grants (State) Op-Non Rec		253,835.00	164,890.00
Grants (Local) Op-Non Rec		10,936.38	7,000.00
Grants Other		43,321.87	19,533.36
<b>Total Grants</b>		<b>630,593.25</b>	<b>283,653.36</b>
<b>Fundraising-Gifts</b>			
Donations Received	5	2,800.25	15,489.80
<b>Total Fundraising-Gifts</b>		<b>2,800.25</b>	<b>15,489.80</b>
<b>Trading/Operating Activities</b>			
Sales of Goods		46,936.47	31,463.78
Fee for Service	6	528,234.66	599,803.91
<b>Total Trading/Operating Activities</b>		<b>575,171.13</b>	<b>631,267.69</b>
Interest-Unrestricted		4,837.66	11,245.73
Other Income	7	53,200.00	15,595.95
<b>Total Income</b>		<b>1,266,602.29</b>	<b>957,252.53</b>
<b>Gross Surplus / (Deficit)</b>		<b>1,266,602.29</b>	<b>957,252.53</b>
<b>EXPENSES</b>			
Advertising & Promotion		27.50	660.81
Assets Purchased		19,871.77	9,678.70
Audit Fees		4,200.00	2,888.51
Bank Charges		290.55	308.35
Board and Governance Expenses		1,578.00	1,900.00
Cleaning & Pest Control		314.88	180.32
<b>Client Support Services</b>			
CSS Community Engagement		7,480.01	23,681.93
CSS Fencing		7,834.20	12,845.72
CSS Monitoring & Evaluation		3,125.40	1,100.00
CSS Project Co-ord/Manag		0.00	0.00
CSS Revegetation		32,447.23	54,785.49
CSS Seed Expenses		547.55	751.41
CSS Landscaping		29,221.52	0.00
CSS Soils Management		1,788.00	21.75
CSS Threat Abatement		82,452.97	63,782.69
<b>Total Client Support Services</b>		<b>164,896.88</b>	<b>156,968.99</b>

Computer Expenses		6,925.31	4,755.58
Depreciation - Motor Vehicle		9,127.79	3,717.82
Equipment Hire		2,001.31	1,367.28
Fees & Permits		362.64	128.00
Health & Safety		1,788.17	3,204.03
Insurance-Building & Contents		1,544.46	1,518.03
Insurance-Public Liability		1,151.40	243.20
Insurance-Professional Indem		389.33	188.76
Insurance-Directors & Officers		260.41	127.09
Legal Fees		382.57	0.00
Meetings Expense		1,333.48	549.97
Membership Fees Paid		68.79	45.45
<b>Motor Vehicle Expenses</b>			
MV Fuel & Oil	14,236.50	15,971.81	
MV Repairs & Maintenance	8,501.63	5,159.99	
MV Insurance	8,931.32	2,866.85	
MV Registration	9,980.47	5,331.33	
MV Lease Payments	21,664.24	41,520.93	
MV Provision Expense	12,750.22	384.51	
MV Other	969.69	521.62	
<b>Total Motor Vehicle Expenses</b>		<b>77,034.07</b>	<b>71,757.04</b>
Postage, Freight & Courier		1,054.65	980.48
Printing & Stationery		4,581.75	5,809.93
Publications & Information Res		331.56	501.81
Rates & Taxes		6,413.15	1,169.78
Rent		20,916.29	20,406.70
Repairs & Maintenance		3,072.64	9,081.31
<b>Salaries &amp; Wages</b>			
S&W Annual Leave Expense	50,657.84	42,455.47	
S&W Long Service Leave Expense	16,209.59	(6,128.87)	
S&W Sick Leave Expense	10,804.46	7,748.02	
S&W Superannuation	58,973.47	59,765.45	
S&W Salaries & Wages	571,738.79	566,780.19	
S&W OHS Expenses	234.75	227.90	
S&W WorkCover Levy	9,390.00	9,324.00	
S&W Maternity Leave Expense	1,600.00	0.00	
S&W Travel Allowance	4,565.76	1,894.91	
<b>Total Salaries &amp; Wages</b>		<b>724,174.66</b>	<b>682,067.07</b>
Security		745.79	311.59
Staff Amenities		313.43	432.68
Sundry Expenses		629.23	996.00
Telephone, Fax & Internet Exp		8,868.41	8,423.07
Training & Development (Staff)		6,215.66	2,800.00
Travel & Accommodation		5,440.28	3,110.91
Utilities		1,692.25	5,539.07
<b>Total Expenses</b>		<b>1,077,999.06</b>	<b>1,001,818.33</b>
<b>Net Surplus / (Deficit)</b>	<b>8</b>	<b>188,603.23</b>	<b>(44,565.80)</b>



**GOOLWA TO WELLINGTON LOCAL ACTION PLANNING ASSOCIATION INC.**

**STATEMENT OF FINANCIAL POSITION**

**FOR THE YEAR ENDED JUNE 30, 2020**

	<b>NOTE</b>	<b>2020</b>	<b>2019</b>
<b>CURRENT ASSETS</b>		<b>\$</b>	<b>\$</b>
Cash at Bank (Unrestricted)		780,638.91	658,284.45
Accounts Receivable	2	<u>225,558.24</u>	<u>203,241.04</u>
<b>TOTAL CURRENT ASSETS</b>		<u><b>1,006,197.15</b></u>	<u><b>861,525.49</b></u>
<b>NON-CURRENT ASSETS</b>			
Motor Vehicles	3	172,817.07	66,224.68
Less Acc Dep on Motor Vehicles		<u>(16,582.26)</u>	<u>(7,454.47)</u>
<b>TOTAL NON-CURRENT ASSETS</b>		<u><b>156,234.81</b></u>	<u><b>58,770.21</b></u>
<b>TOTAL ASSETS</b>		<u><b>1,162,431.96</b></u>	<u><b>920,295.70</b></u>
<b>CURRENT LIABILITIES</b>			
Accounts Payable		17,083.14	5,871.07
Loans Payable		536.79	2,949.57
Payables - Other		9,132.54	33,451.58
GST Payable		65,053.62	41,482.16
Less GST Receivable		(15,045.65)	(8,042.88)
PAYG Withholding Payable		18,526.18	11,492.18
Superannuation Payable		9,060.47	0.00
WorkCover Payable/(Receivable)		<u>135.00</u>	<u>(53.25)</u>
<b>TOTAL CURRENT LIABILITIES</b>		<u><b>104,482.09</b></u>	<u><b>87,150.43</b></u>
<b>PROVISIONS</b>			
Motor Vehicle Provision		25,516.33	12,766.11
Technology Provision		10,000.00	5,000.00
Employee Provisions		<u>113,556.66</u>	<u>95,105.51</u>
<b>TOTAL PROVISIONS</b>		<u><b>149,072.99</b></u>	<u><b>112,871.62</b></u>
<b>TOTAL LIABILITIES</b>		<u><b>253,555.08</b></u>	<u><b>200,022.05</b></u>
<b>NET ASSETS</b>		<u><b>908,876.88</b></u>	<u><b>720,273.65</b></u>
<b>EQUITY</b>			
Unexpended Funds as at July 1, 2019		720,273.65	764,839.45
Current Year Surplus (Deficit)		<u>188,603.23</u>	<u>(44,565.80)</u>
<b>Unexpended Funds as at June 30, 2020</b>		<u><b>908,876.88</b></u>	<u><b>720,273.65</b></u>

**STATEMENT OF CASH FLOW**  
**FOR THE YEAR ENDED JUNE 30, 2020**

	2020 \$	2019 \$
<b>CASH FLOW FROM OPERATING ACTIVITIES</b>		
Net Income	188,603.23	(44,565.80)
Accounts Receivable	(22,317.20)	(136,374.61)
Motor Vehicles	(97,464.60)	(28,876.95)
Accounts Payable	11,212.07	2,632.71
Loans Payable	(2,412.78)	(315.81)
Payables - Other	(24,319.04)	(20,888.46)
GST Payable	23,571.46	14,780.33
GST Receivable	(7,002.77)	6,450.42
PAYG Withholding Payable	7,034.00	298.38
Superannuation Payable	9,060.47	(5,974.83)
WorkCover Payable	188.25	1,285.00
Motor Vehicle Provision	12,750.22	384.51
Technology Provision	5,000.00	(5,010.94)
Employee Provisions	18,451.15	(17,122.09)
<b>Net Cash Flow from Operating Activities</b>	<u>122,354.46</u>	<u>(233,298.14)</u>
<b>NET INCREASE/(DECREASE) IN CASH FOR THE PERIOD</b>	122,354.46	(233,298.14)
Cash at the beginning of the period	<u>658,284.45</u>	<u>891,582.59</u>
Cash at the end of the period	<u><u>780,638.91</u></u>	<u><u>658,284.45</u></u>



**GOOLWA TO WELLINGTON LOCAL ACTION PLANNING ASSOCIATION INC.**

**PROJECT INCOME, EXPENDITURE AND BALANCES**

**FOR THE YEAR ENDED JUNE 30, 2020**

<b>Project Name</b>	<b>Balance at June 30, 2019</b>	<b>Total Income</b>	<b>Total Expenses</b>	<b>Balance at June 30, 2020</b>
20MT River Murray Lower Lakes Restoration project	3,688.45	3,500.00	6,092.75	1,095.70
Angus Bremer Water Management Committee PO FY20	0.00	16,362.50	16,362.50	0.00
Auspiced Goolwa Coastcare Grant 2020	0.00	3,000.00	2,828.37	171.63
Auspiced Goolwa Coastcare Grant - Replenish working bee tools for volunteers	0.00	986.00	76.82	909.18
Auspiced Nalme Landcare Funds	0.00	671.87	0.00	671.87
Auspiced Nalme Landcare Grant -	0.00	1,000.00	0.00	1,000.00
Auspiced Nalme Landcare Grant Community Environment Program 2020	0.00	10,000.00	230.07	9,769.93
Auspiced Nalme Landcare Mount Barker Council Grant	0.00	2,436.38	2,436.38	0.00
Auspiced Prospect Hill Bushland Group Grant - Pygmy Possum monitoring	0.00	1,000.00	1,000.00	0.00
Auspiced Prospect Hill Bushland Group DWS Grant - Revegetating the Bull Creek Catchment	0.00	19,800.00	10,315.30	9,484.70
Alexandrina Council Finniss Quarry revegetation	0.00	5,464.40	0.00	5,464.40
Alexandrina Council Goolwa Waste Depot Direct Seeding	0.00	3,432.80	3,432.80	0.00
Alexandrina Council Old Domestic Cell weed control	0.00	0.00	167.31	-167.31
Alexandrina Council Goolwa Surf Life Saving Club & Dune Remediation Works	0.00	1,984.80	0.00	1,984.80
District Council of Mt Barker Bald Hills Road Brushcutting and Laratinga Spraying	0.00	3,719.20	3,719.20	0.00
District Council of Mt Barker Blackberry Control	0.00	304.80	304.80	0.00
District Council of Mt Barker Kookaburra Reserve Restoration project	4,000.00	0.00	4,000.00	0.00
District Council of Mt Barker Effluent Pond Revegetation Screen	0.00	343.20	343.20	0.00
District Council of Mt Barker Environmental Services Centre revegetation	-970.59	19,536.98	18,566.39	0.00
District Council of Mt Barker Future Proofing Biodiversity in the Mount Barker Region	0.00	5,000.00	0.00	5,000.00
District Council of Mt Barker General Maintenance	-638.36	1,387.15	748.79	0.00
District Council of Mt Barker General Weed Control	0.00	1,027.10	1,027.10	0.00
District Council of Mt Barker Goat Control	0.00	852.75	852.75	0.00
District Council of Mt Barker Gorse Control	0.00	386.00	386.00	0.00
District Council of Mt Barker Ironstone Range Rd revegetation project	443.81	8,306.80	8,750.61	0.00
District Council of Mt Barker Mount Barker Creek Revegetation	0.00	938.40	938.40	0.00
District Council of Mt Barker Meadows Reserves Site Maintenance	0.00	2,385.40	2,385.40	0.00
District Council of Mt Barker Nalme Reserve Brush Cutting	0.00	750.00	750.00	0.00
District Council of Mt Barker National Tree Planting Day field officer	594.00	0.00	594.00	0.00
District Council of Mt Barker Plant Supply	0.00	1,388.00	1,388.00	0.00
District Council of Mt Barker Plant Transport	0.00	500.00	500.00	0.00
District Council of Mt Barker Prospect Hill Blackwood Pocket Forest revegetation	0.00	1,040.30	1,040.30	0.00
District Council of Mt Barker Prospect Hill Blackwood Pocket Forest revegetation	0.00	0.00	403.98	-403.98
District Council of Mt Barker Revegetation Site Preparation	0.00	1,470.00	1,470.00	0.00
District Council of Mt Barker Revegetation Watering Project	0.00	1,083.90	1,083.90	0.00
District Council of Mt Barker Springs Road revegetation	9,643.67	0.00	9,643.67	0.00
District Council of Mt Barker Springs Wetland project 2019	3,909.25	0.00	3,909.25	0.00
District Council of Mt Barker Sustainable Living project 2020	4,314.32	14,820.30	19,134.62	0.00
District Council of Mt Barker Sustainable Living project 2021	0.00	4,545.47	102.30	4,443.17
District Council of Mt Barker Verge Spraying	0.00	1,570.00	1,570.00	0.00
District Council of Mt Barker Weeds of National Significance project	0.00	16,000.00	16,000.00	0.00
District Council of Mt Barker Wetland Management	0.00	9,583.05	9,583.05	0.00
District Council of Yankalilla Carickalinga Gazania Control	2,008.79	0.00	2,008.79	0.00
District Council of Yankalilla Normanville Dune Restoration	1,876.66	0.00	1,876.66	0.00
District Council of Yankalilla Takuremoor Sedgeland restoration project	2,398.23	0.00	2,398.23	0.00
Department of Agriculture, Water & Environment Murray-Darling Basin Economic Dev Grant	0.00	234,000.00	118,864.07	115,135.93
Department of Agriculture, Water & Environment Seeds for Success Grant	0.00	37,900.00	0.00	37,900.00
Department of Industry, Innovation & Science Environment Small Grants	22,283.07	0.00	22,283.07	0.00
Department of Industry, Innovation & Science Jakem Grant	0.00	17,300.00	2,954.55	14,345.45
DEWNR Flows for the Future 2019	0.00	68,312.73	68,312.73	0.00
DEWNR Flows for the Future 2020	0.00	41,947.25	41,947.25	0.00
DEWNR Flows for the Future 2021	0.00	28,865.67	12,077.23	16,788.44
DEWNR Flows for the Future Revegetation project	0.00	4,324.00	4,324.00	0.00
DPTI Goat Control Emerald Quarry	0.00	551.40	551.40	0.00
Finniss Catchment Group Ash and Rose control in the Finniss River	0.00	3,500.00	3,500.00	0.00
Flaxley Landcare Group Broom and Gorse control	0.00	500.00	500.00	0.00
Friends of Cox Scrub weed control	0.00	4,000.00	0.00	4,000.00
Greenfleet site inspection and revegetation opportunity assessment	0.00	1,138.30	1,138.30	0.00
Grove One Beyond Development Landscaping	0.00	3,268.55	3,268.55	0.00
Landcare Association of South Australia FY20	0.00	91,678.00	91,678.00	0.00

Project Name	Balance at June 30, 2019	Total Income	Total Expenses	Balance at June 30, 2020
Landcare Australia Coca Cola Grant Reducing Marine Debris Coorong Community	11,889.39	3,000.00	8,266.22	6,623.17
Landcare Australia Coca Cola Grant Maintaining a Cleaner Coorong	0.00	12,000.00	0.00	12,000.00
Landcare Australia Animal Pest Control	0.00	4,006.40	4,006.40	0.00
Landcare Australia WIRES Grant	0.00	16,000.00	0.00	16,000.00
Landcare Australia Grant Helping Wyndham Farm recover from fire	0.00	11,800.00	7,845.33	3,954.67
Landholder FFS Jobs	0.00	11,084.25	11,286.25	-202.00
Mallee CMA Bat project	0.00	1,787.50	1,787.50	0.00
Martin Road Developments Pty Ltd Spring Lake Maintenance	0.00	17,293.92	17,661.33	-367.41
Martin Road Developments Pty Ltd Spring Lake Verge revegetation	-11.89	4,620.00	4,608.11	0.00
Nature Conservation Society 2019 Spotlighting the Suburbs	3,636.36	500.00	4,136.36	0.00
Nature foundation/Alexandrina Council Milang Snipe Sanctuary	0.00	3,100.00	3,100.00	0.00
Nature Foundation Fire Recovery Grant Administration	0.00	4,455.00	0.00	4,455.00
Nature Foundation Watchakunga Plant Supply 2020	0.00	7,102.00	7,102.00	0.00
Nature Foundation Watchakunga Site Maintenance 2019	-2,092.17	9,250.00	6,407.83	750.00
Nature Foundation Water for Nature	0.00	10,644.39	10,644.39	0.00
NR AMLR Wildlife for Wine Shingleback and Rivers property revegetation	4,989.34	0.00	4,989.34	0.00
NR AMLR Leask Olive control	0.00	11,000.00	11,000.00	0.00
NR AMLR Splay Rush Control	0.00	9,000.00	4,954.90	4,045.10
NR AMLR Toukemoor Gahnia Planting	0.00	3,000.00	1,054.90	1,945.10
NR SA MDB Alexandrina Community Nursery Equipment for Nursery and Volunteers	980.00	0.00	980.00	0.00
NR SA MDB Alexandrina Community Nursery - Nursery tables	1,000.00	0.00	1,000.00	0.00
NR SA MDB Add Soil Monitoring	0.00	22,363.64	22,363.64	0.00
NR SA MDB African Lovegrass Control 2019	340.30	0.00	340.30	0.00
NR SA MDB African Lovegrass Control 2020	0.00	5,908.64	5,908.64	0.00
NR SA MDB African Lovegrass Trial Mt Compass	6,316.89	1,493.00	7,809.89	0.00
NR SA MDB African Lovegrass Trial Taillem Bend	6,577.62	8,397.50	14,975.12	0.00
NR SA MDB Aquatic Plant Trial and Milang Slashing	3,105.00	2,750.00	5,855.00	0.00
NR SA MDB Bat monitoring and analysis	0.00	236.36	236.36	0.00
NR SA MDB Coastal and Wetland Project 2020	0.00	24,000.00	24,000.00	0.00
NR SA MDB Community Engagement 2020	0.00	80,700.00	70,454.24	10,245.76
NR SA MDB Frogwatch 2021	0.00	2,900.00	0.00	2,900.00
NR SA MDB General weed control	-267.81	0.00	-267.81	0.00
NR SA MDB Monarto Revegetation project	2,319.02	0.00	2,319.02	0.00
NR SA MDB NRM Education 2020	0.00	8,590.85	8,590.85	0.00
NR SA MDB VSG Replace rusty nursery benches	0.00	900.00	0.00	900.00
NR SA MDB Roadside African Boxthorn Control 2020	0.00	4,090.91	2,247.83	1,843.08
NR SA MDB SNRC Nursery benches for SNRC	0.00	999.00	0.00	999.00
NR SA MDB SNRC Landscaping	400.00	0.00	400.00	0.00
NR SA MDB Growing plants better at the SNRC	0.00	600.00	0.00	600.00
NR SA MDB Swamp Priority Weed Control Works Mt Compass area	8,232.33	0.00	8,232.33	0.00
NR SA MDB Wyndgate Tall Wheat Grass control project 2020	4,000.00	0.00	-2,782.46	6,782.46
NR SA MDB Tolderal Project	4,790.04	0.00	0.00	4,790.04
Red Gum Revival	0.00	40,000.00	102,394.32	-62,394.32
Red Gum Woodland Restoration	-2,441.99	100,750.00	52,257.83	46,050.18
Woodside Fire Recovery Seedlings	0.00	1,306.15	1,306.15	0.00
Terramin Strathalbyn Community Consultative Committee	0.00	2,225.00	2,225.00	0.00
Trees for Life FFS Cross Belvidere revegetation project	-478.12	7,610.00	7,131.88	0.00
Yankalilla Service Station Landscaping	0.00	1,910.00	1,910.00	0.00
Provision for Audit and AGM Costs	-7,300.00	0.00	-1,100.00	-6,200.00
Motor Vehicle Depreciation	0.00	0.00	\$ 16,582.26	-16,582.26
GWLAP Gift Fund	2,982.52	342.70	1.60	3,323.62
GWLAP Project Funds	323,353.97	55,687.47	16,107.05	362,936.39
Non Project Funds	173,408.00	4,837.66	29,164.29	149,081.37
GWLAP Alexandrina Community Nursery	30,187.09	44,496.50	36,781.43	37,902.16
Seed Bank (GWLAP)	29,529.20	0.00	-3,069.80	32,599.00
SNRC Management Committee	2,103.45	0.00	711.17	1,392.28
Staff Salaries 2020	11,714.97	0.00	11,714.97	0.00
Staff Salaries 2021	0.00	0.00	-4,216.55	4,216.55
Wages Provision	47,456.84	0.00	-3,237.19	50,694.03
	720,273.65	1,266,602.29	1,077,999.06	908,876.88



**GOOLWA TO WELLINGTON LOCAL ACTION PLANNING ASSOCIATION INC**

**NOTES TO THE FINANCIAL STATEMENTS**

**FOR THE YEAR ENDED JUNE 30, 2020**

**NOTE 1: STATEMENT OF SIGNIFICANT ACCOUNTING POLICIES**

This financial report is a special purpose financial report prepared in order to satisfy the financial reporting requirements of the Associations Incorporation Act 1985 (SA) and the ACNC Act 2012 (Div. 60 – Reporting).

The Members of the Board have determined that the Association is not a reporting entity.

This financial report has been prepared in accordance with the requirements of the Associations Incorporation Act 1985 (SA) and the following Australian Accounting Standards:

- AASB 15 - Revenue from Contracts with Customers
- AASB 101 - Presentation of Financial Statements
- AASB 107 - Statement of Cash Flows
- AASB 108 - Accounting Policies, Changes in Accounting Estimates and Errors
- AASB 110 - Events after the Reporting Period
- AASB 1031 - Materiality
- AASB 1048 - Interpretation of Standards
- AASB 1058 - Income of Not for profit entities

No other applicable Accounting Standards, Urgent Issues Group Consensus Views or other authoritative pronouncements of the Australian Accounting Standards Board have been applied.

The following material accounting policies, which are consistent with the previous period unless otherwise stated, have been adopted in the preparation of this financial report.

- a) **Accounting Method** - Accrual Accounting
- b) **Currency** - All values are presented in Australian Dollars
- c) **Measurement Basis** - The financial report is based on historical costs. It does not take into account changing money values, or, except where specifically stated, current valuations of non-current assets
- d) **Income Tax** - The Goolwa to Wellington Local Action Planning Association has Income Tax Exemption status with the Australian Taxation Office
- e) **Goods & Services Tax** - Revenue and expenses are recognised exclusive of the amount of GST
- f) **Employee Entitlements** - Provision is made in respect of the statutory legal liability arising from services rendered by employees to balance date.

**NOTE 2: RECEIVABLES**

	<b>2020</b>	<b>2019</b>
Alexandrina Council	11,970.20	1,682.29
Angas Bremer Water Management Committee	3,452.94	3,348.54
Angas River Catchment Group	200.00	0.00
Department for Energy and Mining	0.00	1,028.72
Department for Environment and Water	21,649.97	65,505.00
District Council of Yankalilla	0.00	4,530.68
Eastern Fleurieu School	0.00	75.00
Friends of Cox Scrub	4,400.00	0.00
Foskett, C	0.00	1,072.50
Greenfleet	700.48	0.00
Habitats SA Revegetation Services	0.00	1,694.81
Lanser Developments	0.00	1,732.50
McInnes, A	0.00	255.00
Mount Barker District Council	28,716.38	17,433.35
Native Vegetation Council	138,325.00	67,375.00
Natural Resources Adelaide and Mt Lofty Ranges	3,300.00	13,050.20
Nature Foundation	1,558.33	0.00
SA MDBC NRM Board	8,404.94	23,515.00
Schofield, L	75.00	233.00
Summers, M	0.00	563.20
Terramin Australia Ltd	605.00	146.25
Various members of the public - Mt Barker Plant Packs	2,200.00	0.00
<b>Total</b>	<b>\$225,558.24</b>	<b>\$203,241.04</b>

#### **NOTE 3: MOTOR VEHICLES**

During 2019-20 GWLAP Motor Vehicle asset increased by \$106,592.39 as a result of purchasing 3 additional work vehicles to replace those which were previously leased.

#### **NOTE 4: OPERATING GRANTS - CONDITIONS OF FUNDING**

Grants for some of the projects that the GWLAP is currently undertaking were provided by: Department of Agriculture and Water Resources, Natural Resources SA MDB NRM, the Native Vegetation Council, Department of Industry, Innovation and Science, Landcare Australia Ltd, Alexandrina and Mount Barker Councils. A condition of this funding is that these funds be applied for the purposes of meeting project targets within the time frames specified. Any unspent funds are required to be reimbursed on completion of these projects.

#### **NOTE 5: DEDUCTIBLE GIFT RECIPIENT STATUS**

GWLAP was endorsed as a Deductible Gift Recipient under Subdivision 30-BA of the Income Tax Assessment Act 1997 on April 27th 2016.

#### **NOTE 6: OPERATING FEE FOR SERVICE INCOME**

Many of the projects undertaken by GWLAP during 2019-20 were funded by third party Fee for Service agreements. Major funding providers for the year included the Department of Environment and Water, Natural Resources SA MDB, Natural Resources Adelaide & Mt Lofty Ranges, Landcare Association of South Australia, Alexandrina Council, Mt Barker Councils, Nature Foundation SA and Martin Road Developments. Various community groups and private landholders also provided Fee for Service income during 2019-20.

Conditions of some of these third party agreements include the provision of progress reports at stipulated dates throughout the project plus a final report upon project completion which track the progress of meeting agreed project targets using the funds available. Any unexpended funds from these funding agreements are applied to other non-funded projects in the GWLAP region.

#### **NOTE 7: OTHER INCOME**

Other Income of \$53,200 includes the \$50,000 Covid19 Federal Government Cash Flow Stimulus which was payable for the 2019-20 Financial year.

#### **NOTE 8: NET SURPLUS/DEFICIT**

When interpreting the Net Surplus/Deficit for the financial year, consideration should be given to the timing of income and expenditure for individual projects, which can occur over consecutive financial years. ie. project funding may be received in one financial year and expended against in the following one.

#### **NOTE 9: UNEXPENDED FUNDS**

Total unexpended funds appearing on the Statement of Financial Position represents both committed and free GWLAP project funds. Committed funding is tracked through individual project codes. A full list of outstanding GWLAP projects has been included within these Financial Statements.

#### **NOTE 10: ORGANISATIONAL BACKGROUND**

The Goolwa to Wellington Local Action Plan Steering Committee and then Board (Incorporated in February 1998) was created to get a more integrated approach to identify the extent and severity of the major "landcare" or natural resource management issues of this part of the SA Murray Darling Basin and develop strategies to address these issues. The Goolwa to Wellington Local Action Planning Board Incorporated resolved to change its name on October 10th 2007 to Goolwa to Wellington Local Action Planning Association Incorporated.



**STATEMENT OF THE MANAGEMENT COMMITTEE OF  
GOOLWA TO WELLINGTON LOCAL ACTION PLANNING ASSOCIATION INC.**

**In accordance with Section 35(2)(c) of the Associations Incorporations Act 1985, It is the opinion of the Members of the Board that,**

- (a) The accompanying Statement of Financial Performance is drawn up so as to give a true and fair view of the operations of the Association for the year ended 30/6/20;
- (b) The accompanying Statement of Financial Position is drawn up so as to give a true and fair view of the state of affairs of the Association as at 30/6/20;
- (c) At the date of this Statement there are reasonable grounds to believe that the Association will be able to pay its debts as and when they fall due.

Signed in accordance with a resolution of the Board.

Date: 09/09/2020

Date: 09/09/2020

Member: Derek

Member: [Signature]

**REPORT OF THE MANAGEMENT COMMITTEE OF  
GOOLWA TO WELLINGTON LOCAL ACTION PLANNING ASSOCIATION INC.**

In accordance with section 35 (5) of the Associations Incorporations Act, 1985 the Board hereby states that during the financial year ended June 30, 2020:

- (a) (1) no officer of the association;  
(2) no firm of which an officer is a member; and  
(3) no body corporate in which an officer has a substantial interest,

has received or become entitled to receive a benefit as a result of a contract between the officer, firm or body corporate and the association.

- (b) no officer of the association has received directly or indirectly from the association any payment or other benefit of a pecuniary nature.

Signed in accordance with a resolution of the Board.

Date: 09/09/2020

Member: Derek

Date: 09/09/2020

Member: D



## **INDEPENDENT AUDITOR'S REPORT TO THE MEMBERS OF GOOLWA TO WELLINGTON LOCAL ACTION PLANNING ASSOCIATION INC. (THE ASSOCIATION)**

### ***Report of the Financial Report***

We have audited the accompanying financial report, being a special purpose financial report, of The Goolwa to Wellington Local Action Planning Association Inc. (The Association), which comprises the Statement of Financial Position as at 30 June 2020, the Statement of Financial Performance, Notes to the Financial Statements and the Statement and Report by members of the Management Committee.

### ***Committee's Responsibility and those charged with Governance for the Financial Report***

The committee of The Association is responsible for the preparation and fair presentation of the financial report and have determined that the accounting policies described in Note 1 to the financial statements which form part of the financial report are consistent with the financial reporting requirements of the Associations Incorporation Act SA 1985 and the Australian Charities and Not for Profit Commission Act 2012 (Part 3-2 Div. 60 – Reporting) and are appropriate to meet the needs of the members. The committee's responsibilities also included establishing and maintaining internal control relevant to the preparation and fair presentation of the financial report that is free from material misstatement, whether due to fraud or error; selecting and applying appropriate accounting policies; and making accounting estimates that are reasonable in the circumstances.

In preparing the financial report, the committee is responsible for assessing the Association's ability to continue as a going concern, disclosing, as applicable matters relating to going concern and using the going concern basis of accounting unless the committee either intends to liquidate the Association or to cease operations, or has no realistic alternative but to do so.

Those charged with governance are responsible for overseeing the entity's financial reporting process.

### ***Auditor's Responsibility***

Our responsibility is to express an opinion on the financial report based on our audit. No opinion is expressed as to whether the accounting policies used, as described in Note 1, are appropriate to meet the needs of the members. We conducted our audit in accordance with Australian Auditing Standards. These Auditing Standards require that we comply with relevant ethical requirements relating to audit engagements and plan and perform the audit to obtain reasonable assurance whether the financial report is free from material misstatement.

An audit involves performing procedures to obtain audit evidence about the amounts and disclosures in the financial report. The procedures selected depend on the auditor's judgment, including the assessment of the risks of material misstatement of the financial report, whether due to fraud or error. In making those risks assessments, the auditor considers internal control relevant to the entity's preparation and fair presentation of the financial report in order to design audit procedures that are appropriate in the circumstances, but not for the purpose of expressing an opinion on the effectiveness of the entity's internal control. An audit also includes evaluating the appropriateness of accounting policies used and the reasonableness of accounting estimates made by the committee, as well as evaluating the overall presentation of the financial report.

The financial report has been prepared for distribution to members for the purpose of fulfilling the committee's financial reporting under the Associations Incorporation Act SA 1985 and the Australian Charities and Not for Profit Commission Act 2012 (Part 3-2 Div. 60 – Reporting). We disclaim any assumption of responsibility for reliance on this report or on the financial report to which it relates to any person other than the members, of for any purpose other than that for which it was prepared.

We believe that the audit evidence we have obtained is sufficient and appropriate to provide a basis for our audit opinion.

### ***Independence***

We are independent of the Association in accordance with the ethical requirements of the Accounting Professional and Ethical Standards Boards APES 110 Code of Ethics for Professional Accountants (the code) that are relevant to our audit of the financial report in Australia. We have also fulfilled our other ethical responsibilities in accordance with the Code.

### ***Auditor's Opinion***

In our opinion, the Financial Statements of The Association presents fairly in all material respects the financial position of The Association as of 30 June 2020 and of its financial performance for the year then ended in accordance with the accounting policies described in Note 1 to the financial statements.



Michael W.J. Perrey CPA  
Perrey Bozzetti & Associates  
127 SWANPORT ROAD  
MURRAY BRIDGE SA 5253

Dated: 11<sup>th</sup> September 2020